



**SAPPHIRE REPORT**

August 10, 2012

GIA REPORT 6147845588

Weight ..... **2.22 carat**  
 Measurements ..... **7.16 x 5.79 x 5.27 mm**  
 Shape ..... **Octagonal**  
 Cutting Style: ..... **Modified Brilliant Cut**  
 Transparency ..... **Transparent**  
 Color ..... **Purple**

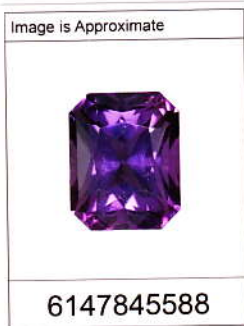
**CONCLUSION**

Species ..... **NATURAL CORUNDUM**  
 Variety ..... **SAPPHIRE**  
 Source Type ..... **CMT Type IV**  
 Geographic Origin ..... **NOT REQUESTED**

**TREATMENT**

**Indications of heating (TE)**

Comments:  
None



| No Indications of Heating | Indications of Heating (no residue) | Indications of Heating with Residue in Fissures |     |                              |     |                                 |
|---------------------------|-------------------------------------|---|-----|------------------------------|-----|---------------------------------|
|                           |                                     | TE1   | TE2 | TE3                          | TE4 | TE5                             |
| No Indications of Heating | Indications of Heating              | Minor Residue in Fissures                       |     | Moderate Residue in Fissures |     | Significant Residue in Fissures |



This Report is not a guarantee, valuation or appraisal and contains only the characteristics of the article described herein after it has been graded, tested, examined and analyzed by the laboratory providing this Report ("GIA") and/or has been inscribed using the techniques and equipment used by GIA at the time of the examination and/or inscription. Inscriptions reported in this document are not a guarantee, validation, or warranty of an article's quality, country of origin or source; or that the article will be identifiable by the inscription in the future (since inscriptions can be removed). GIA makes no representation concerning any trademark, word, or symbol which is inscribed by GIA or which is identified on this Report. The recipient of this Report may wish to consult a credentialed jeweler or gemologist about the information contained herein.

**IMPORTANT LIMITATIONS ON BACK**  
©2008 GEMOLOGICAL INSTITUTE OF AMERICA, INC.